



Towards Sustainable Tourism Destination: Addressing Waste Management Solutions in Bali

Budi Shantika¹, I Nyoman Cahyadi Wijaya²

^{1,2}Universitas Pendidikan Nasional, Denpasar, Indonesia

email: 1budishantika@undiknas.ac.id, 2cahyadiwijaya@undiknas.ac.id



Article history

Received on
23 September 2024

Revised on
26 September 2024

Accepted on
27 November 2024

Abstract

Purpose: This research aims to examine the challenges in waste management in Bali, with a focus on the role of the community in supporting sustainable tourism practices.

Research methods: This research combines qualitative interviews with community leaders and analysis of quantitative data on waste management from various initiatives.

Results and discussion: Community involvement significantly increases the effectiveness of waste management strategies. In particular, initiatives such as waste banks and local clean-up campaigns have galvanized community participation, resulting in increased recycling rates and reduced waste in affected areas. Empowering local communities results in innovative solutions and a stronger sense of ownership of environmental issues for sustainable tourism practices.

Implication: Policymakers should prioritize community-based approaches in waste management strategies to achieve successful sustainable tourism practices.

Keywords: Bali waste management, community engagement, sustainable tourism, environmental sustainability

Menuju Destinasi Pariwisata Berkelanjutan: Mengatasi Solusi Pengelolaan Sampah di Bali

Abstrak

Tujuan: Penelitian ini bertujuan untuk mengkaji tantangan dalam pengelolaan sampah di Bali, dengan fokus pada peran inisiatif masyarakat dalam mendukung praktik pariwisata berkelanjutan.

Metode penelitian: Penelitian ini menggabungkan wawancara kualitatif dengan pemimpin komunitas dan analisis kuantitatif data pengelolaan sampah dari berbagai inisiatif.

Hasil dan pembahasan: Keterlibatan masyarakat secara signifikan meningkatkan efektivitas strategi pengelolaan sampah. Secara khusus, inisiatif seperti bank sampah dan kampanye bersih-bersih lokal telah membangkitkan partisipasi penduduk, yang menghasilkan peningkatan tingkat daur ulang dan pengurangan sampah di daerah yang terpengaruh. Pemberdayaan masyarakat lokal menghasilkan solusi inovatif dan rasa kepemilikan yang lebih kuat atas isu-isu lingkungan untuk praktik-praktik pariwisata berkelanjutan.

Implikasi: Pembuat kebijakan sebaiknya memprioritaskan pendekatan berbasis masyarakat dalam strategi pengelolaan sampah untuk mencapai keberhasilan praktik-praktik pariwisata berkelanjutan.

Kata kunci: pengelolaan sampah bali, keterlibatan komunitas, pariwisata berkelanjutan, keberlanjutan lingkungan

INTRODUCTION

Bali, known for its stunning landscapes, rich culture, and vibrant tourism industry, has become one of the most sought-after travel destinations in the world. The island attracts millions of visitors each year, drawn by its beautiful beaches, lush rice terraces, and unique cultural experiences (Wiguna, 2021). This influx of tourists significantly contributes to the local economy, providing jobs and supporting numerous businesses (Kemenparekraf/Baparekraf RI, 2023). Yet, the rapid growth of tourism, combined with an increasing local population, has led to significant challenges in waste management on the island (Septiariva *et al.*, 2023).

Waste management in Bali encompasses the processes of collecting, transporting, processing, recycling, and disposing of waste generated by both residents and visitors (Septiariva *et al.*, 2022). As the island grapples with issues such as overflowing landfills, inadequate recycling systems, and increasing pollution, the need for effective waste management solutions has never been more pressing (Mananda & Sudiarta, 2024). The escalating waste crisis threatens not only the environment but also public health and the livelihoods of local communities. The tourism sector, in particular, is a major contributor to waste generation, producing large amounts of plastic, food waste, and other refuse that strain existing waste management systems.

This research explores the current state of waste management in Bali, particularly in relation to its tourism sector, which is a significant driver of waste generation. It highlights the complexities and challenges faced by local governments and communities, examining the various initiatives being undertaken to address these issues. These initiatives include grassroots movements, government campaigns, and collaborations with the tourism industry aimed at reducing plastic use and promoting sustainable practices among both residents and visitors. Additionally, this study will identify opportunities for foreigners to engage in and contribute to sustainable waste management practices in Bali. By harnessing technology, investment, and collaborative efforts, there is potential for meaningful change that not only improves waste management but also supports the island's ecological and cultural integrity.

Research on waste management in Bali has highlighted several critical concerns, particularly in the context of the island's thriving tourism industry. A significant focus has been on the ecological impacts of waste mismanagement. Studies indicate that improper disposal practices contribute substantially to environmental degradation, resulting in issues such as soil and water pollution, loss of biodiversity, and threats to marine ecosystems (Ardiyanto *et al.*, 2024). For example, the accumulation of plastic waste along Bali's beaches not only detracts from the island's natural beauty but also poses serious risks to marine life, which can ingest or become entangled in debris.

Another essential aspect of waste management in Bali is the effectiveness of community-led initiatives. Research shows that when local residents actively participate in waste management efforts, the outcomes can improve significantly. Grassroots movements, including community clean-up days and educational campaigns, have been effective in enhancing recycling rates and reducing

littering (Asteria & Herdiansyah, 2022). These initiatives foster a sense of ownership and responsibility among residents, making them vital for a sustainable waste management strategy.

In addition to community efforts, government policies aimed at promoting sustainable tourism practices have come under scrutiny. Various studies have assessed the effectiveness of regulations and initiatives intended to reduce waste generation within the tourism sector. While some policies have successfully encouraged sustainable practices among businesses and tourists, others reveal notable gaps in implementation and enforcement (Agamuthu & Babel, 2023). For instance, even though regulations limiting single-use plastics exist, the lack of adequate waste collection and recycling infrastructure often undermines these efforts.

Building on these findings, this research aims to provide a comprehensive analysis of the current state of waste management in Bali's tourism sector. It will explore the complex interplay between tourism, waste generation, and sustainable practices, addressing the systemic challenges faced by local governments and communities. Furthermore, the study will propose actionable recommendations that leverage both community engagement and effective policy implementation. By focusing on innovative solutions tailored to Bali's unique context, this research seeks to contribute meaningfully to the ongoing discourse on sustainable tourism and responsible waste management practices (Sari *et al.*, 2021).

Previous studies have delved into various aspects of waste management in Bali, particularly emphasizing the ecological impacts linked to tourism, the effectiveness of community-led initiatives, and the role of government policies in fostering sustainable tourism practices. Research has demonstrated how tourist behaviour contributes to waste generation and how the tourism industry can play a pivotal role in encouraging sustainable practices (Sukmawati *et al.*, 2022). Moreover, studies highlight the necessity for improved waste management strategies that engage both tourists and local businesses in sustainability efforts (Septiariva *et al.*, 2023).

Ecologically, the consequences of inadequate waste management are profound. Several studies underscore how mismanaged waste pollutes land and waterways, adversely affecting local wildlife and ecosystems. Reports indicate alarming levels of marine debris, particularly plastic, endangering marine life and impacting Bali's vital fishing and tourism industries.

Community-led initiatives have emerged as vital components in addressing waste management challenges. Grassroots movements have successfully mobilized local populations to participate in clean-up efforts and educational campaigns, fostering a culture of sustainability. The critical role of women in managing waste banks and supporting waste management within local communities highlights the importance of community engagement (Asteria & Herdiansyah, 2022). Local involvement has been shown to significantly improve recycling rates and reduce littering, demonstrating the power of collective action in creating effective waste management solutions.

The objectives of this research are threefold. First, it aims to assess the current waste management practices in Bali, with a particular focus on the impact of the tourism industry. Second, the study will evaluate the effectiveness of existing initiatives designed to reduce waste and promote sustainability within both local communities and the tourism sector. Finally, this research will propose

innovative solutions and strategies that can enhance waste management efforts, ultimately fostering responsible tourism practices that benefit both the environment and the local population.

RESEARCH METHODS

This study on waste management in Bali will employ a qualitative approach, integrating document study, case studies, and natural observation to provide a comprehensive understanding of current practices and challenges.

The research will involve a thorough analysis of existing literature, government reports, and statistical data related to waste management in Bali. Key documents will include relevant waste management policies, tourism statistics, and previous research that sheds light on the ecological impacts of waste mismanagement and the effectiveness of community-led initiatives. Case study approach will be utilized to explore specific examples of successful waste management initiatives within Bali's tourism sector. These selected case studies will highlight various strategies implemented by local governments, non-governmental organizations, and community groups. This in-depth analysis will offer valuable insights into how these initiatives operate, their outcomes, and the lessons learned from their implementation (Wiweka & Pickel-Chevalier, 2022).

Natural observation will also play a crucial role in this research. Observations will be conducted in key tourist areas and local communities to assess waste management practices in real-time. Researchers will focus on waste disposal behaviours, the presence and condition of waste management infrastructure, such as bins and recycling stations, and the level of community engagement in waste management activities. This method will provide firsthand data on how waste is managed in everyday settings and reveal the interactions between tourists and residents regarding waste disposal.

By combining these methods, the study aims to create a holistic view of waste management in Bali, shedding light not only on existing challenges but also on potential pathways for improvement. This integrated approach will contribute valuable insights into sustainable waste management practices tailored to Bali's unique context, fostering a deeper understanding of how to enhance environmental sustainability in the region.

RESULT AND DISCUSSION

Current Waste Management Practices

The waste management systems in Bali are currently facing significant challenges, largely due to the rapid increase in waste generated by both the local population and the influx of tourists. This situation is compounded by several factors, including inadequate infrastructure for waste collection and recycling, as well as the specific types of waste produced by the tourism industry.

Bali's tourism sector attracts millions of visitors each year, leading to a substantial rise in waste production. The island generates approximately 3,800 metric tons of waste daily, with a significant portion stemming from tourists (Farahdiba *et al.*, 2023). This influx has outpaced the capacity of existing waste management systems, which were not designed to handle such high volumes. A large percentage of the waste generated in Bali is composed of plastics and food waste. The tourism industry is particularly notorious for its contribution to plastic waste, including single-use items such as bags, straws, and bottles. These

materials are not only prevalent but also difficult to manage due to their non-biodegradable nature, leading to long-term environmental issues.

The infrastructure for waste collection and recycling in Bali is insufficient to cope with the growing waste problem. Many areas lack proper waste bins, and existing collection services are often irregular or ineffective. Consequently, a significant amount of waste ends up being dumped on streets, beaches, and rivers, or is incinerated, which creates additional environmental hazards.

Moreover, the recycling systems in place are inadequate. While there are initiatives aimed at increasing recycling rates, the lack of facilities and public awareness severely hampers these efforts. Many recyclable materials are not processed correctly, resulting in increased landfill use and further environmental degradation. The mismanagement of waste has dire ecological consequences. Plastic waste poses a significant threat to marine life, as it can lead to ingestion and entanglement. The accumulation of waste not only detracts from Bali's natural beauty but also jeopardizes the livelihoods of local communities that depend on tourism and fishing.

The challenges faced by Bali's waste management systems are multifaceted, stemming from the rapid growth of the tourism industry and significant infrastructural inadequacies. Addressing these issues requires a comprehensive approach that includes improving waste collection and recycling facilities, enhancing public awareness, and implementing stricter regulations on waste management practices. Without substantial changes, the environmental and economic impacts of waste mismanagement will continue to escalate, threatening both the island's ecological integrity and its tourism-dependent economy.

Environmental Impacts

Improper waste disposal in Bali has led to significant environmental degradation, profoundly affecting both soil and water quality. The challenges of waste management on the island are exacerbated by the high volume of waste generated, particularly from the thriving tourism sector. This influx of waste contributes to pollution that adversely impacts local wildlife and ecosystems.

In terms of soil pollution, the accumulation of waste, especially plastics in landfills and open dumping sites results in soil contamination. Toxic substances from decomposing waste leach into the ground, compromising soil health and adversely affecting agricultural practices, which are vital for the livelihoods of many Balinese residents. Moreover, improper waste disposal practices contribute to significant water pollution. Plastics and other debris often enter rivers and coastal waters, contaminating freshwater sources and marine environments. This pollution not only degrades the quality of drinking water but also poses serious risks to aquatic ecosystems.

The impact on marine life is particularly alarming. The accumulation of plastic waste in Bali's waters has dire consequences for various aquatic species. Reports indicate that marine debris leads to ingestion and entanglement issues. For instance, marine animals such as fish, turtles, and seabirds often mistake plastic debris for food. Ingesting plastics can result in internal injuries, starvation, and even death. Studies have shown that microplastics are prevalent in the diets of many marine organisms, potentially causing cascading effects throughout the food chain and posing health risks to humans who consume contaminated seafood (Hendrawan *et al.*, 2023). Additionally, larger pieces of plastic, like

fishing nets and debris, create significant entanglement risks for marine animals, leading to injury or drowning, particularly in vulnerable species like sea turtles and marine mammals. The phenomenon of ghost fishing, where abandoned or lost fishing gear continues to ensnare marine life, further exacerbates these challenges in Bali's waters.

Bali has witnessed several alarming incidents related to plastic pollution and its impact on marine life. In response, various actions have been initiated to combat plastic pollution. Beach cleanups organized by local communities and organizations have become increasingly common, aiming to tackle the visible effects of plastic waste (Boakes *et al.*, 2022). However, these efforts often address only the symptoms of the problem rather than its root causes related to waste mismanagement. The Indonesian government has also recognized the issue, setting targets to reduce marine plastic debris by 70% by 2025 (Jones, 2019). Nonetheless, implementing effective waste management policies remains challenging due to inadequate infrastructure and limited public awareness.

Research conducted in Bali has highlighted the critical state of marine pollution, revealing high concentrations of microplastics in coastal waters and sediments (Spranz & Schlüter, 2023). These findings underscore the urgent need for comprehensive strategies to address plastic waste and protect marine ecosystems. The interplay of improper waste disposal and its resultant pollution poses serious threats to local wildlife, especially marine species that suffer from ingestion and entanglement in plastic debris. Addressing these multifaceted issues requires a holistic approach that includes improved waste management infrastructure, enhanced public education, and stricter enforcement of environmental regulations. Only through such concerted efforts can Bali hope to mitigate the environmental degradation caused by waste mismanagement and preserve its unique ecosystems for future generations.

Effectiveness of Community Initiatives

Community initiatives in Bali have emerged as highly effective strategies for improving waste management outcomes, primarily through community engagement, educational programs, and grassroots mobilization. Research demonstrates that when local communities actively participate in waste management efforts, they develop a stronger sense of ownership and responsibility towards their environment (Darma *et al.*, 2020). This engagement is crucial not only for raising awareness about the impacts of waste but also for fostering long-term behavioural changes.

Educational programs play a significant role in this process, as they inform residents about the importance of recycling and proper waste disposal. For instance, initiatives that teach effective waste sorting can enhance the quality of recyclables collected, subsequently improving recycling rates. Moreover, community-led clean-up campaigns address immediate litter problems while instilling sustainable practices among participants. Individuals who engage in these activities often become advocates for environmental responsibility within their households and neighbourhoods, promoting a culture of sustainability.

Grassroots initiatives that mobilize local populations have shown remarkable success in reducing litter and increasing public awareness about waste management. These initiatives leverage local knowledge and networks, creating tailored solutions that resonate with community members. Local leaders are often instrumental in these efforts, inspiring and mobilizing residents to

participate. Their ability to build trust and collaborate with various stakeholders, such as local businesses and government entities, further enhances the effectiveness of these programs.

The visible impact of clean-up campaigns, such as cleaner streets and beaches, serves as a powerful motivator for continued community involvement. When residents see the direct benefits of their efforts, they are more likely to remain engaged and encourage others to join (Sabrina *et al.*, 2022). Overall, the effectiveness of community initiatives in Bali underscores the vital role of local involvement in addressing waste management challenges. By fostering a culture of responsibility and enhancing recycling rates through grassroots efforts, these initiatives not only lead to improved environmental outcomes but also strengthen community ties. Continued support for such programs is essential for sustaining these positive changes and ensuring a cleaner, more sustainable future for Bali.

Government Policy Evaluation

The evaluation of government policies regarding waste management in Bali highlights critical challenges that hinder effective reduction of waste generation. Despite regulations such as Bali Governor Regulation No. 97 of 2018 aimed at banning single-use plastics (Suasih *et al.*, 2024; Astuti *et al.*, 2024), implementation gaps persist due to inconsistent compliance from businesses—particularly in traditional markets—where single-use plastics remain prevalent. This inconsistency undermines policy effectiveness and emphasizes the need for stronger enforcement mechanisms. Moreover, Bali's regulatory framework is complicated by overlapping regulations across various administrative levels, which creates confusion among stakeholders and complicates compliance efforts (Fatimah *et al.*, 2020; Ardiyanto *et al.*, 2024). The lack of robust monitoring systems further limits data collection on waste generation and management practices, impeding policymakers' ability to assess policy effectiveness. To address these systemic issues effectively, significant improvements are necessary in both infrastructure and community engagement. Many regions still lack adequate facilities for waste collection and recycling; thus, comprehensive systems are essential to manage the high volume of waste generated by both residents and tourists. Policies should not only focus on single-use plastics but also promote broader strategies like recycling initiatives and community-led educational campaigns that foster sustainable behaviors among tourists. Grassroots movements have shown promise in driving change through local engagement—demonstrating that when communities are empowered to participate actively in waste management efforts, they can significantly improve outcomes (Atmanti *et al.*, 2024; Visuwan *et al.*, 2024). By integrating these community-driven approaches with effective regulatory frameworks and enhanced monitoring capabilities, Bali can cultivate a sustainable tourism environment that supports both ecological integrity and economic viability.

Case Studies, Best Practices, Innovative Solutions and Recommendations

Successful waste management initiatives in Bali highlight effective strategies employed by local governments and NGOs, showcasing the critical importance of collaboration among various stakeholders, including businesses and community groups (Boakes *et al.*, 2023). One prominent example is the Bali Waste Management Program by Bali Partnership (www.balipartnership.org), which partners with local NGOs, hotels, and waste haulers to enhance solid

waste management practices in the tourism sector. This program emphasizes waste segregation at the source, recycling, and composting, resulting in significant reductions in landfill waste. Participating hotels have reported recycling rates of up to 60%, demonstrating the effectiveness of these practices in mitigating the waste crisis.



Figure 1. Bali partnership
(Source: www.balipartnership.org)

Another impactful initiative is Trash Hero World, a grassroots organization that mobilizes both local communities and tourists for regular beach clean-ups and waste education campaigns. Since its inception, Trash Hero has organized numerous clean-up events, successfully removing thousands of kilograms of waste from Bali's beaches. This initiative not only addresses immediate litter problems but also fosters awareness about responsible waste disposal among locals and visitors alike.

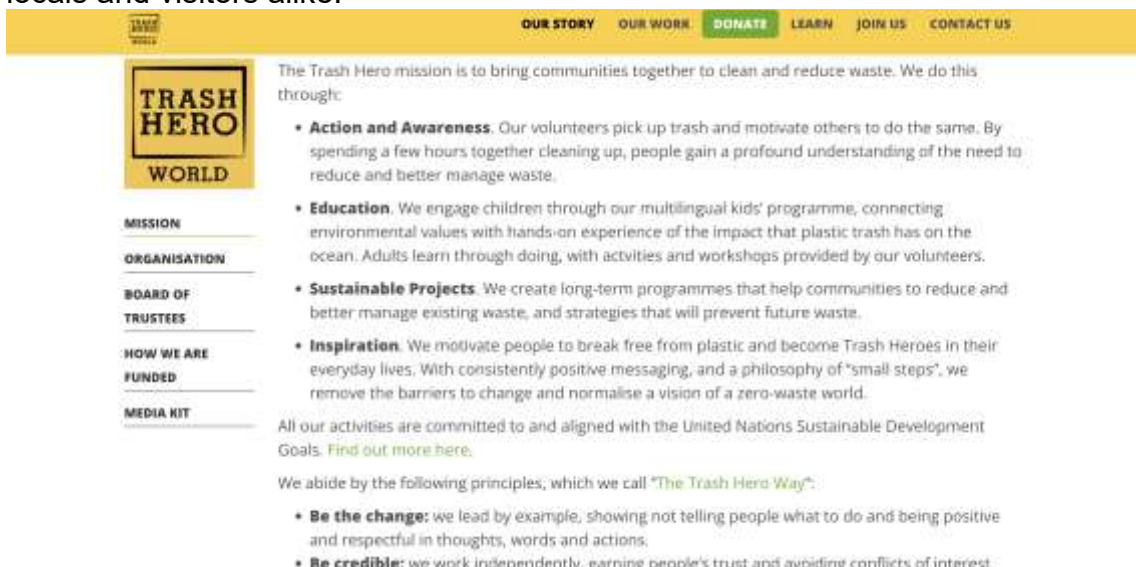


Figure 2. Trash Hero World
(Source: <https://trashhero.org/>)

The Zero Waste Community Program in the village of Banjarsari further exemplifies effective community engagement. This program encourages residents to separate their waste into organic, inorganic, and hazardous categories, leading to a remarkable reduction in waste output by over 30%. Its success has inspired neighbouring communities to adopt similar practices, showcasing the ripple effect that effective local initiatives can have.



Figure 3. Zero-waste communities
(Source: www.zerowaste.com)

Insights gained from these case studies provide valuable lessons for future waste management strategies in Bali. First, collaboration is key, successful initiatives often involve partnerships between local governments, NGOs, businesses, and community members, ensuring a diverse range of perspectives and resources are utilized effectively. Second, education and awareness are crucial for fostering a culture of sustainability. Programs that engage residents and tourists in understanding the impacts of waste and the importance of proper disposal can lead to meaningful behavioural changes. Lastly, adaptability is essential; initiatives must be tailored to fit the specific characteristics and needs of local communities to enhance their effectiveness and sustainability.

To further improve waste management practices, innovative solutions and recommendations must be implemented. Leveraging technology and attracting investment are critical for developing sustainable waste management solutions. For instance, investing in waste-to-energy technologies can significantly reduce the volume of waste sent to landfills while generating renewable energy from organic waste. Such facilities can convert waste into biogas, which can be used for cooking or electricity generation, addressing both waste management and energy needs.

Implementing smart waste management systems, such as sensor-equipped bins that monitor waste levels, can optimize collection routes and schedules, reducing operational costs and improving efficiency. Promoting collaboration among local communities, tourists, and the tourism industry is also essential for fostering sustainable practices. Engaging the tourism sector by encouraging hotels and businesses to adopt sustainable practices, such as reducing single-use plastics and implementing recycling programs, can drive broader participation.

Supporting community-led initiatives, such as local clean-up events and educational workshops, empowers residents to take ownership of their environment and promotes responsible waste management practices. Moreover, establishing public-private partnerships can facilitate investment in waste management infrastructure and technology, ensuring that resources are allocated effectively to address the challenges faced by Bali.

The case studies and best practices in Bali illustrate the potential for successful waste management initiatives through collaboration, education, and innovative solutions. By leveraging technology, fostering community engagement, and promoting sustainable practices within the tourism sector, Bali can enhance its waste management efforts and work towards a cleaner, more sustainable future.

CONCLUSION

The analysis of waste management practices in Bali has illuminated several critical issues and opportunities that align with the research objectives. The current waste management systems face overwhelming pressures from a rapidly increasing local population and an ever-growing influx of tourists. These challenges are compounded by inadequate infrastructure and a significant prevalence of non-biodegradable waste, particularly plastics, which have further exacerbated environmental degradation affecting both terrestrial and marine ecosystems. To effectively tackle these issues, enhancing waste collection and recycling infrastructure is essential. Existing policies, such as the prohibition of single-use plastics, require stronger enforcement mechanisms to ensure compliance across all sectors. The evaluation of government policies highlights the need for a cohesive regulatory framework that is both comprehensive and adaptable to the unique challenges posed by Bali's tourism-driven economy.

Community initiatives have emerged as powerful tools for improving waste management outcomes through local engagement and education. These grassroots efforts not only cultivate a culture of environmental responsibility but also enhance recycling rates and reduce litter. Successful programs like the Bali Waste Management Program and Trash Hero World exemplify the importance of collaboration among local governments, NGOs, and community members in driving effective change. Looking ahead, it is crucial to implement innovative solutions, such as smart waste management technologies and waste-to-energy initiatives, to optimize waste processing and alleviate the burden on landfills. Engaging the tourism sector in sustainable practices is vital for fostering broader participation in waste reduction efforts and ensuring that visitors contribute positively to the local environment.

Addressing Bali's waste management challenges necessitates a multifaceted approach that seamlessly integrates effective policy enforcement, community involvement, and innovative strategies. Effective policy enforcement serves as a foundation for these efforts. While regulations like the prohibition of single-use plastics exist, their success depends on robust monitoring and enforcement mechanisms. Local authorities and community leaders must be well-trained to oversee compliance, particularly in markets where single-use items remain common. Regular audits and transparent public reporting on waste management practices can create a culture of accountability, ensuring that regulations lead to meaningful action.

Complementing these regulatory efforts is the critical role of community involvement. Engaging residents through educational programs significantly enhances awareness of the importance of waste segregation and responsible disposal. Community-led initiatives, such as clean-up campaigns and waste sorting workshops, have successfully mobilized action and fostered a sense of ownership over local environments. When local leaders champion these efforts, they inspire residents to adopt sustainable practices, creating a grassroots movement that complements top-down regulatory measures.

To support these initiatives, innovative strategies must be employed. Implementing smart waste management technologies, such as sensor-equipped bins that monitor waste levels, can optimize collection routes and reduce operational costs. Additionally, investing in waste-to-energy facilities addresses the growing volume of waste while generating renewable energy. By embracing circular economy principles—where waste is minimized and materials are reused, Bali can significantly reduce its environmental footprint, aligning economic activities with ecological sustainability.

Fostering collaboration across sectors is essential for a comprehensive approach. Public-private partnerships can facilitate much-needed investment in waste management infrastructure, while engaging businesses in sustainable practices can amplify community efforts. Encouraging local hotels and enterprises to reduce single-use plastics and adopt recycling initiatives not only enhances waste management outcomes but also reinforces the importance of sustainability within the tourism sector.

Ultimately, the long-term sustainability of Bali's waste management efforts relies on continuous education and adaptability. As waste generation patterns evolve, ongoing research and data collection will provide insights necessary for refining strategies and policies. By prioritizing a cohesive approach that encompasses regulation, community engagement, and innovation, Bali can effectively mitigate the environmental impacts of waste mismanagement, preserve its unique ecosystems, and sustain its vital tourism industry for future generations. This comprehensive strategy not only addresses current challenges but also sets a precedent for other regions, paving the way for a cleaner, more sustainable future for all.

REFERENCES

- Agamuthu, P., & Babel, S. (2023). Waste Management Developments in the Last Five Decades: Asian Perspective. In *Waste Management and Research* (Vol. 41, Issue 12). <https://doi.org/10.1177/0734242X231199938>
- Ardiyanto, F., Prakasa, G., & Achmadi, T. (2024). Rediscover Paradise: Elevating Bali's Marine Tourism through Sustainable Solid Waste Management (SSWM). *Journal of Marine-Earth Science and Technology*, 5(1). <https://doi.org/10.12962/j27745449.v5i1.1069>
- Astuti, N. N. S., Virginiya, P. T., Bagiastuti, N. K., & Septevany, E. (2024). The Future of Green Tourism in Bali: Challenges and Opportunities. *Journal of Applied Sciences in Travel and Hospitality*, 7(2), 178–195. <https://doi.org/10.31940/jasth.v7i2.178-195>.
- Atmanti, H. D., Mahendra, F. N., & Chrestella, A. (2024). Correlation of Waste Management and Tourist Visits at Tourist Destinations in Indonesia. 03(10), 985–998.

- Asteria, D., & Herdiansyah, H. (2022). The role of women in managing waste banks and supporting waste management in local communities. *Community Development Journal*, 57(1). <https://doi.org/10.1093/cdj/bsaa025>.
- Boakes, Z., Hall, A. E., Ampou, E. E., Jones, G. C. A., Suryaputra, I. G. N. A., Mahyuni, L. P., Prasetijo, R., & Stafford, R. (2022). Coral reef conservation in Bali in light of international best practice, a literature review. In *Journal for Nature Conservation* (Vol. 67). <https://doi.org/10.1016/j.jnc.2022.126190>.
- Boakes, Z., Mahyuni, L. P., Hall, A. E., Cvitanovic, M., & Stafford, R. (2023). Can Coral Reef Restoration Programmes Facilitate Changes in Environmental Attitudes? A Case Study on a Rural Fisher Community in North Bali, Indonesia. *Human Ecology*, 51(5). <https://doi.org/10.1007/s10745-023-00452-7>.
- Darma, I. G. K. I. P., Kusuma Dewi, M. I., & Kristina, N. M. R. (2020). Community Movement of Waste Use to Keep the Image of Tourism Industry in Gianyar. *Journal of Indonesian Tourism, Hospitality and Recreation*, 3(1). <https://doi.org/10.17509/jithor.v3i1.23439>.
- Farahdiba, A. U., Warmadewanthi, I. D. A. A., Fransiscus, Y., Rosyidah, E., Hermana, J., & Yuniarto, A. (2023). The present and proposed sustainable food waste treatment technology in Indonesia: A review. *Environmental Technology and Innovation*, 32. <https://doi.org/10.1016/j.eti.2023.103256>.
- Fatimah, Y. A., Govindan, K., Murniningsih, R., & Setiawan, A. (2020). Industry 4.0 based sustainable circular economy approach for smart waste management system to achieve sustainable development goals: A case study of Indonesia. *Journal of Cleaner Production*, 269. <https://doi.org/10.1016/j.jclepro.2020.122263>.
- Hendrawan, I. G., Pamungkas, P. B. P., Adibhusana, M. N., Maharta, I. P. R. F., Saraswati, N. L. G. R. A., Wilcox, C., & Hardesty, B. D. (2023). Characteristics and distribution of stranded plastic pollution in Bali conservation areas. In *Marine Pollution Bulletin* (Vol. 197). <https://doi.org/10.1016/j.marpolbul.2023.115770>.
- Jones, C. A. (2019, June 18). *Indonesia's Journey to Reduce 70% of Marine Waste by 2025*. <https://Asc.Fisipol.Uqm.Ac.Id/2019/06/18/Indonesias-Journey-to-Reduce-70-of-Marine-Waste-by-2025/> (Diakses pada 09 November 2024).
- Kemendagri/Baparekraf RI. (2023, August 20). *Expert Survey: Tourism and Creative Economy Sectors to Grow in 2024*. <https://Kemendagri.Go.Id/En/Articles/Expert-Survey-Tourism-and-Creative-Economy-Sectors-to-Grow-in-2024> (Diakses pada 09 November 2024).
- Mananda, I. G. P. B. S., & Sudiarta, I. N. (2024). The Role of Ecopreneurship in Bali's Sustainable Tourism Development: Insights into Government Policy, Tourist Awareness and Preferences. *Journal of Environmental Management and Tourism*, 15(1). [https://doi.org/10.14505/jemt.v15.1\(73\).10](https://doi.org/10.14505/jemt.v15.1(73).10).
- Sabrina, I. M., Hartato, M., Ahmad, Y. R., Arifin, M., & Kinasih EAA, P. (2022). Community Social Impact Analysis of Kelan Green Beach Tourism Development (PT Pertamina Patra Niaga DPPU Ngurah Rai CSR

- Program). *Indonesian Journal of Social Responsibility Review (IJSRR)*, 1(2).
- Sari, M. M., Inoue, T., Harryes, R. K., Suryawan, I. W. K., Yokota, K., Notodarmojo, S., Priyambada, I. B., & Septiariva, Y. (2021). Potential of Waste to Energy Processing for Sustainable Tourism in Nusa Penida Island, Bali. *Jurnal Bahan Alam Terbarukan*, 10(2). <https://doi.org/10.15294/jbat.v10i2.33679>.
- Septiariva, I. Y., Sari, M. M., Istanabi, T., Suhardono, S., Prayogo, W., & Suryawan, I. W. K. (2023). The Effect of the COVID-19 Pandemic on Waste Management in the Eastern Tourism Regions of Java and Bali Islands. *Ecological Engineering and Environmental Technology*, 24(3). <https://doi.org/10.12912/27197050/159430>.
- Septiariva, I. Y., Suhardono, S., Sari, M. M., & Suryawan, I. W. K. (2022). Preliminary Analysis of the Utilization of PET Plastic Waste in Tourism Areas for Energy Recovery. *IJCA (Indonesian Journal of Chemical Analysis)*, 5(2). <https://doi.org/10.20885/ijca.vol5.iss2.art2>.
- Spranz, R., & Schlüter, A. (2023). *The Plastic Bag Habit and the Ocean Bali: From Banana Leaf Wrappings to Reusable Bags*. https://doi.org/10.1007/978-3-031-20740-2_14.
- Setiawan, INAF; I Made Subrata Sandhiyasa, I Nyoman Jayanegara, I Wayan Adi Putra Yasa, I Nyoman Yoga Trisemarawima, Gede Darma Setiawan, (2024). Implementation of Augmented Reality on Traditional Sikut Satak Architecture in Balinese Traditional Houses Based on Android. *2024 IEEE International Symposium on Consumer Technology (ISCT)*, 7-4.
- Suasih, N. N. R., Saputra, I. M. Y., Mustika, M. D. S., & Widiani, N. M. N. (2024). Waste Management Policy in Bali Province, Indonesia. *Journal of Law and Sustainable Development*, 12(1). <https://doi.org/10.55908/sdgs.v12i1.2677>.
- Sukmawati, N. M. R., Ginaya, G., Wendri, I. G. M., Komala, I. G. A. M. K., & Pemayun, I. D. G. A. (2022). From Garbage to Profit: Creative Economy and 3R Waste Management System in Tenganan Tourism Village Bali. *International Journal of Social Science Research and Review*, 5(12).
- Visuwan, D., Luangpaiboon, P., & Luangpaiboon, P. (2024). Assessing the Effectiveness of Solid Waste Management in Thailand's Tourist Industry via the Use of DEA-Based Methods. *International Journal of Environmental Science and Development*, 15(3), 146–156. <https://doi.org/10.18178/ijesd.2024.15.3.1480>.
- Wiguna, P. P. K. (2021). Using Big Global Database to Analyse Impact of Web News to Tourist Visits due to the 2017 Eruption of Agung Volcano, Bali, Indonesia. *Geographia Technica*, 16(2). https://doi.org/10.21163/GT_2021.162.04.
- Wiweka, K., & Pickel-Chevalier, S. (2022). Bali Tourism Research Trends: A Systematic Review, 1976–2022. *Jurnal Kajian Bali*, 12(2). <https://doi.org/10.24843/JKB.2022.v12.i02.p14>.